

### Description

The H strainer plays a fundamental role in protecting hydraulic systems, as it prevents impacts and clogging of control and regulation components in the event of stone intrusion caused by debris flow or breakages.

Unlike other models, the top-entry intake H strainer is designed to provide easy access through a simple opening operation, allowing cleaning and maintenance without the need for uncomfortable or difficult interventions or special space requirements for cartridge removal.

Another improvement is the reinforcement with a cast-iron grate to prevent collapse in the event of blockage, which can occur in other types of strainers, with the consequent dragging of stones.

It is equipped with lateral connections, as in most cases opening a side valve is sufficient for draining and cleaning solid particles, and with an air vent at the top for air release. This guarantees 100% of the filtering surface and depressurization of the H strainer before opening the lid.

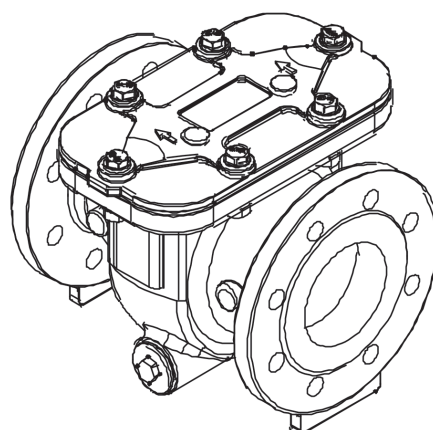
Due to its excellent performance, it is the ideal component for use in control valves and meters. For this reason, a flow stabilizer has been integrated at the outlet to correct possible turbulence resulting from water passing through the H strainer.

### Features

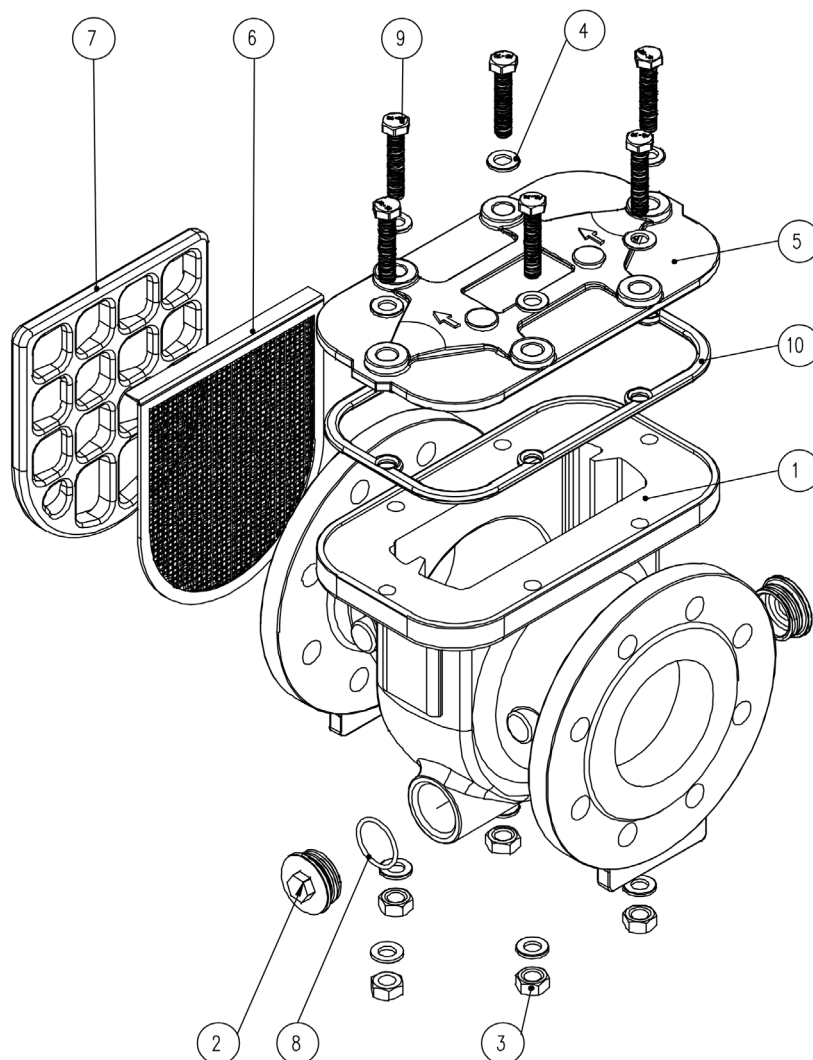
- Provides a low pressure drop
- Supports a high pressure differential
- Is particularly easy to clean
- Diffuser on the outlet
- Manual air purge valve on the top for safe and efficient network operation.

### Sizes and standards

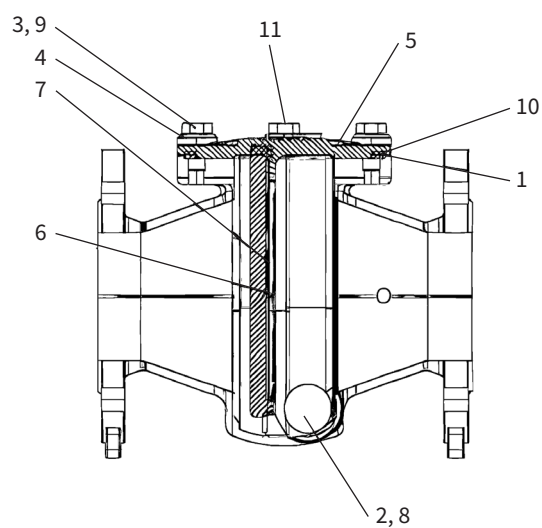
- **DN:** DN50 - DN400
- **PN:** 10/16/25/40
- **Body, head and support:** EN-GJS 450-10
- **Strainer:** SUS304 or SUS316
- **Option:** Mesh, Drain Kit

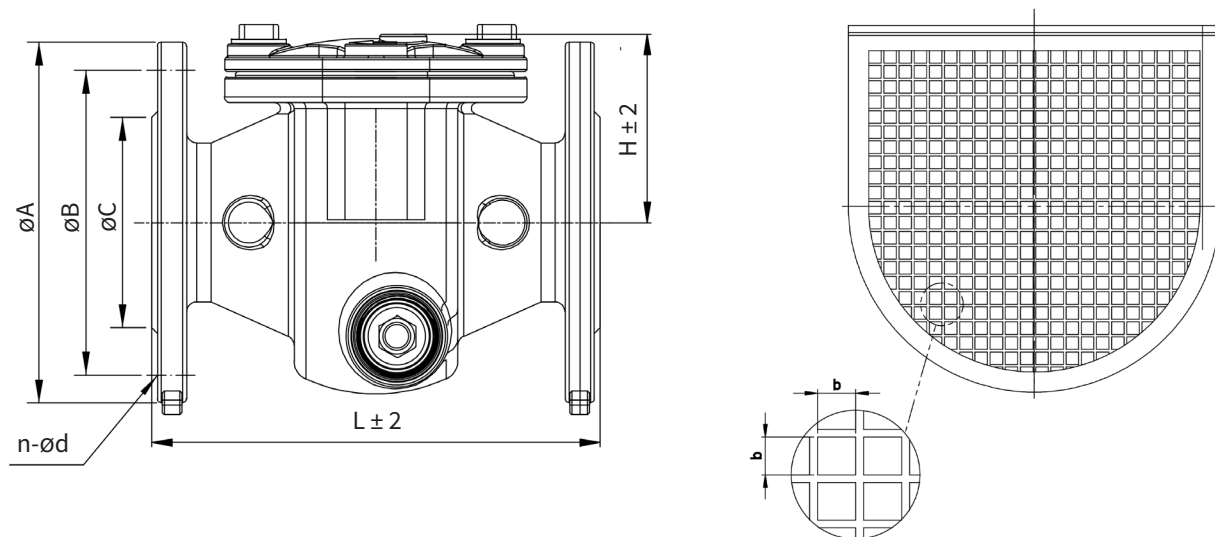


## Materials



N°	PART	MATERIAL
1	Filter body	GJS500-7
2	Plug	SS304
3	Nuts	A2-70
4	Gasket	SS304
5	Filter cover	Q235
6	Filter mesh	SS304
7	Skeleton	GJS500-7
8	O ring	EPDM
9	Bolts	A2-70
10	Middle head seal ring	EPDM
11	Purge air valve	SS304





### Dimensions

DN	PN	L	H	b	ØA	ØB	ØC	n-Ød
50	10/16/25	230	92	2	165	125	95	4-19
65	10/16/25	230	94	2	185	145	114	4-19
80	10/16/25	300	132	2	200	160	138	8-19
100	10/16	300	134	2	235	180	158	8-19
125	10/16	400	174	2	270	210	188	8-19
150	10/16	400	177	2	300	240	212	8-19
200	10/16	504	214	2	360	295	270	8-19
250	25	580	264	4	425	355	320	12-23
300	25	610	296	4	485	410	378	12-28
350	16	700	334	4	520	470	440	16-28
400	16	800	392	6	580	525	487	16-31

